



## **Inspyder Photo Lab User Manual**

© 2011 Inspyder Software Inc.

# Inspyder Photo Lab (Photo Lab) User Manual

© 2011 Inspyder Software Inc.

All rights reserved. No parts of this work may be reproduced in any form or by any means - graphic, electronic, or mechanical, including photocopying, recording, taping, or information storage and retrieval systems - without the written permission of Inspyder Software Inc.

Products that are referred to in this document may be either trademarks and/or registered trademarks of the respective owners. The publisher and the author make no claim to these trademarks.

While every precaution has been taken in the preparation of this document, the publisher and the author assume no responsibility for errors or omissions, or for damages resulting from the use of information contained in this document or from the use of programs and source code that may accompany it. In no event shall the publisher and the author be liable for any loss of profit or any other commercial damage caused or alleged to have been caused directly or indirectly by this document.

Printed November 2011 in Canada.

# Table of Contents

<b>1</b>	<b>Getting Started.....</b>	<b>1</b>
<b>2</b>	<b>Projects .....</b>	<b>4</b>
<b>3</b>	<b>Effects .....</b>	<b>5</b>
3.1	Black & White .....	5
3.2	Border .....	5
3.3	Brightness and Contrast .....	5
3.4	Crop .....	5
3.5	Drop Shadow .....	6
3.6	Flip .....	6
3.7	Hue and Saturation .....	6
3.8	Invert .....	6
3.9	Resize .....	6
3.10	Rotate .....	7
3.11	Text .....	7
3.12	Watermark .....	7
<b>4</b>	<b>Save Images.....</b>	<b>8</b>
<b>5</b>	<b>License Agreement.....</b>	<b>10</b>

## 1 Getting Started

Using Photo Lab is easy. The first step is to open one or more images that you wish to modify. Click the "**Add Images**" button located on the main toolbar.

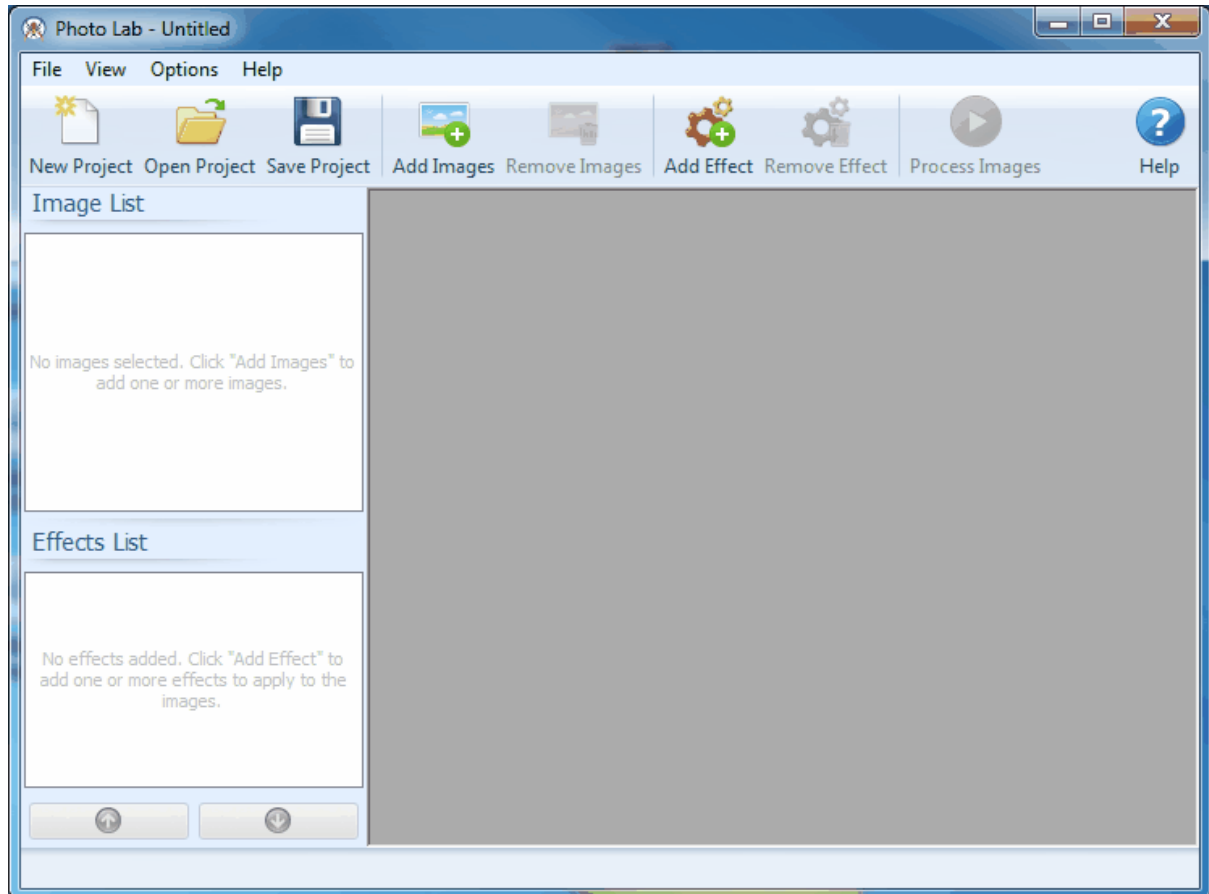
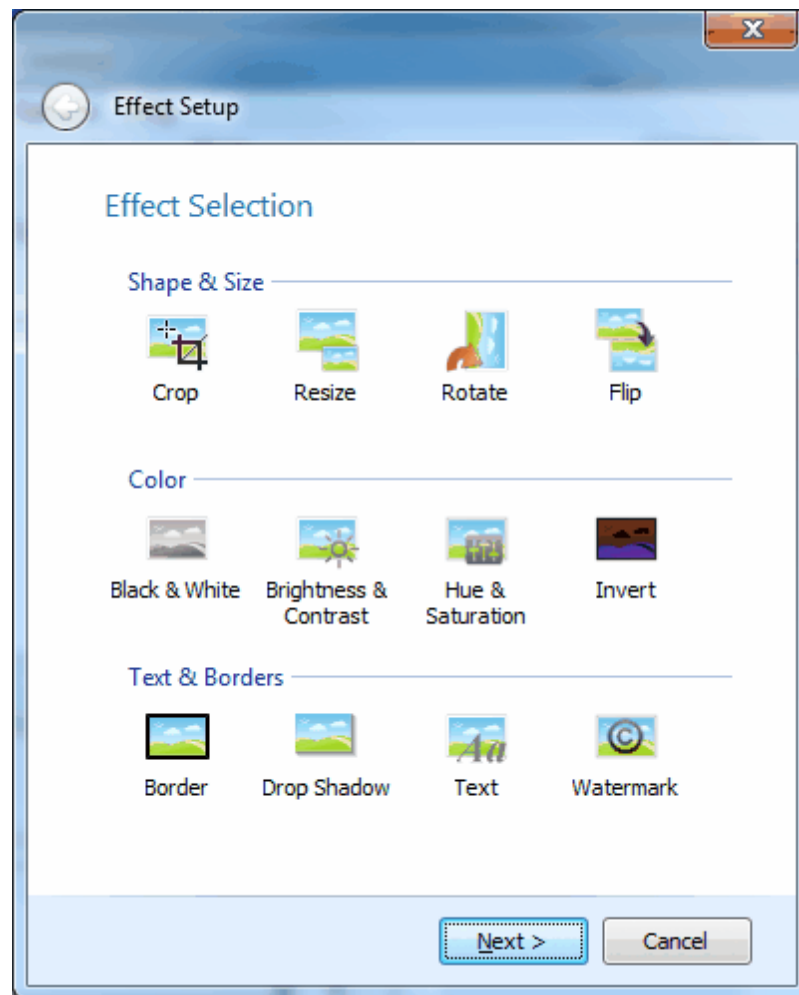


Photo Lab Main Application Window

After you choose the images you wish to edit they will be located under the "Image List" on the left hand side of the application window. You can add or remove images from this list at any time using the "Add Images" and "Remove Images" buttons respectively. Selecting an image in the Image List will open two preview windows, one showing the original image file and the other showing the modified image (with all effects applied).

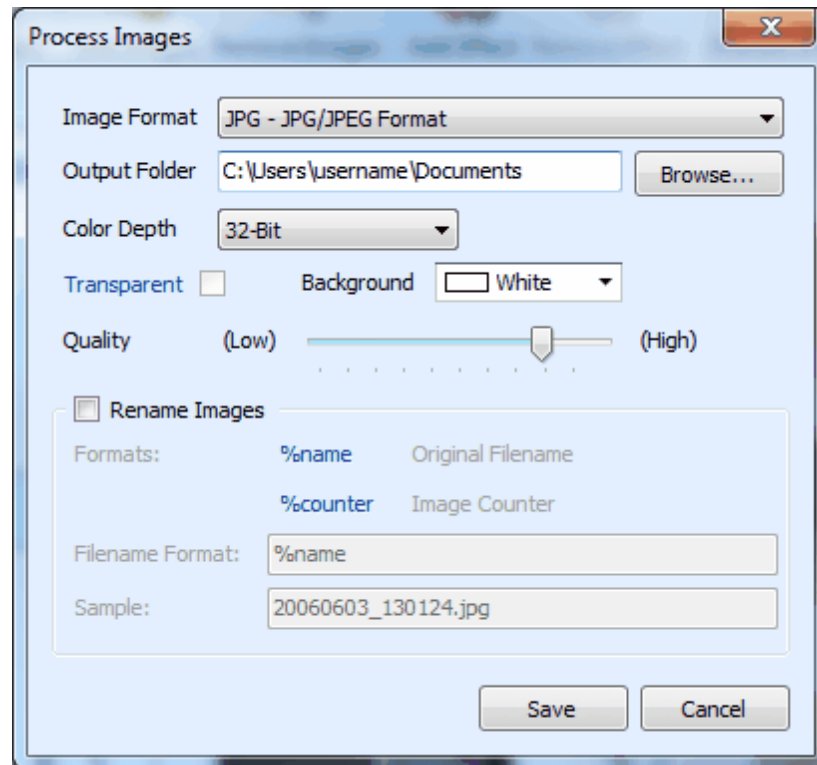
The next step is to add one or more "**Effects**" to your Project. Each "**Effect**" will be applied to all the images in the Image List. An "Effect" represents a change that will be made to the image. Available effects include rotation, resizing, cropping, watermarks, adding text, etc. Click "**Add Effect**" to select your first effect.



Select an effect from the list of available options, then click the **Next** button. On the second page of the Effect Setup wizard you'll be shown the options and settings that correspond to the effect you selected. Many effects have a preview image that will allow you to view the changes made by your effect in real time. Once you're satisfied click "Finish" to save the effect.

You can add multiple effects to your project to create complex changes to your images. You can change the order that your effects are applied in by using the "Up" and "Down" buttons located below the effects list. The order in which effects are applied is important to the final images. For example, if you use a "Text" effect before a "Rotate" effect, then the text will be applied first, then everything will be rotated. The result is that the text will appear rotated on the image. If your "Text" effect appears after the "Rotate" effect, the the image will be rotated first, with the text applied after.

Once you're satisfied, click the "**Save Images**" button to apply all the effects to all the images and save them to the location of your choice.



The most important settings on this screen are the Image Format option and Output Folder. Use Image Format to select the type of Image Files you want Photo Lab to save your modified images as. The Output Folder is the folder on your PC where the modified images will be saved. Clicking "Save" will begin the process.

## 2 Projects

A Photo Lab project is where your effects and image selection are stored. When you first run Photo Lab an 'Untitled' project is created. After adding images and effects you can save your project for future use. Saving projects is helpful if you wish to reuse the same settings again in the future. For example, a photographer may set up a standard project that contains the same resize and watermark settings used to send proofs to clients. By saving and reloading the old project, you can save time by not configuring the same settings again.

To save or open an existing project file, use the "Save Project" and "Open Project" shortcuts on the main toolbar. Project files end with the ".plp" file extension.

If you attempt to open a project file, but the images that the project uses have been moved, Photo Lab will tell you that some images could not be loaded. (These missing images will automatically be removed from the Image List.)

## 3 Effects

Effects are used to configure image manipulations within Photo Lab. You can add one or more Effects to any project in Photo Lab. Effects can be reordered using the "Up" and "Down" buttons located below the effects list (or by right clicking on the effects list directly). Effects are applied to each image in the same order, from the top of the list to the bottom.

The following sections explain each effect in detail. Each effect has a "Name" field. This can be customized to make it easier to remember what each effect is doing in your project. For example, you may wish to rename a "Rotate" effect "Rotate 90 Degrees" to make it clearer in your Effects list.

Remember, each effect can be used multiple times. For example, if you wish to place text along the top and bottom of the image, use the "Text" effect twice (once for the text anchored to the bottom of the image, and once for the text anchored to the top).

Effects can also be combined to create additional effects. For example, to create text that is rotated 90 degrees on the image, use three effects: Rotate the image right 90 degrees, then use a Text effect to add the text, then rotate the image back in the opposite direction 90 degrees. Don't worry if you make a mistake. You can always add, remove and reorder the effects in your project.

### 3.1 Black & White

The Black & White filter converts a color image to a black and white (grayscale) image. This filter has no additional settings.

### 3.2 Border

The Border effect allows you to create a solid color border around the image. Border is sometimes used in conjunction with the "Text" effect to create a frame with the photographer's name or copyright over top.

Use the "Color" selector to choose the border color. The "Size" selector allows you to select the border width in Pixels. The Opacity slider is used to select how transparent the border is. Slide this all the way to the right for a fully opaque border.

If the "Outer Border" checkbox is checked, the image size will be expanded to make room for the border. None of the pixels in the original image will be overwritten. If the "Outer Border" is unchecked, the border will be drawn overtop of the existing image (some pixels will be overwritten).

### 3.3 Brightness and Contrast

The Brightness and Contrast effect allows you to configure the image brightness and color contrast. Use the respective sliders to adjust the values. The "Reset" button restores each slider to its default position (0).

### 3.4 Crop

The Crop effect allows you to trim part of an image. Use the selection region on the preview image to select the area of the image that you wish to keep.

The "Absolute" option crops each image in your image list (regardless of size) by the exact dimensions specified by the crop region. This option is typically used when all the images in the Image List are similar in size and you wish to remove the same part of each image.

The "Percentage" option crops each image by a relative amount based on the crop region. This is useful if your images vary in size and you wish to crop a proportional region from each image.

### 3.5 Drop Shadow

The Drop Shadow effect enables you add a shadow effect around an image. The shadow can be cast in any direction using the "Shadow Direction" selection pad.

Use the "Shadow Color" selector to choose the color of the shadow. The "Size" and "Softness" controls allow you change how pronounced the shadow is and the crispness of the shadow edges. If softness is set to "0" the shadow will have no blending around the edges (very crisp).

The "Opacity" slider selects how transparent the shadow is. Move this slider all the way to the right to make the shadow fully opaque.

The "Rounded Borders" checkbox allows you to add some additional softness to the shadow for a more realistic effect.

### 3.6 Flip

The Flip effect is used to mirror an image. Images can be flipped vertically (upside down), or horizontally (left to right). Flip is different than rotating, as the image is mirrored instead of turned.

### 3.7 Hue and Saturation

The Hue and Saturation effect allows you to configure the image hue and saturation. Use the respective sliders to adjust the values. The "Reset" button restores each slider to it's default position (0).

### 3.8 Invert

The Invert effect inverts the image's colors creating a negative image. This effect has no user configurable settings.

### 3.9 Resize

The Resize Effect allows you to increase or decrease the size of the original images in the image list. Typically this effect is used to reduce the overall size of all the images in the image list. Common reasons for doing this is to create thumbnail images for use in an online image gallery or to reduce the size of images to make them more convenient to email.

Images can be resized to an exact size using the "**Fixed Size**" option or proportionally using the "**Percentage**" option (each image will be reduced by the same amount based on the original image size).

The **Preserve Aspect Ratio** checkbox is used to link the Width and Height settings so that the height/width proportions of the original image are the same in the resized image.

The **Stretch Image** option indicates that the resized images should be stretched to fill the given width and height settings. If this option is unchecked, the image will be resized by the same proportions as the original images with any remaining space being filled with the "**Background Fill**" color.

### 3.10 Rotate

The Rotate effect is used to turn an image clockwise or counter clockwise. Images can only be rotated 90, 180 and 270 degrees.

### 3.11 Text

The Text effect allows you to add a text overlay to your image. Enter the text you wish to appear on your image in the "Text" field, and select the position of the text using the direction pad.

You can change the size, color and font of the text using the "Font..." button.

The Padding setting allows you to add extra spacing around your text. Use this to increase the distance from the edge of the image when positioning the text around the perimeter of the image.

The Opacity slider allows you to set the transparency of the text. Slide this all the way to the right to make the text fully opaque.

### 3.12 Watermark

The Watermark effect allows you to add a logo or text overlay to an image. This effect is useful for placing a translucent copyright notice or logo on your images in an unobtrusive way.

If "Image" watermark is selected, you can add choose an image file using the browse button. The "Image Scaling" setting allows you to increase or decrease the size of the watermark image.

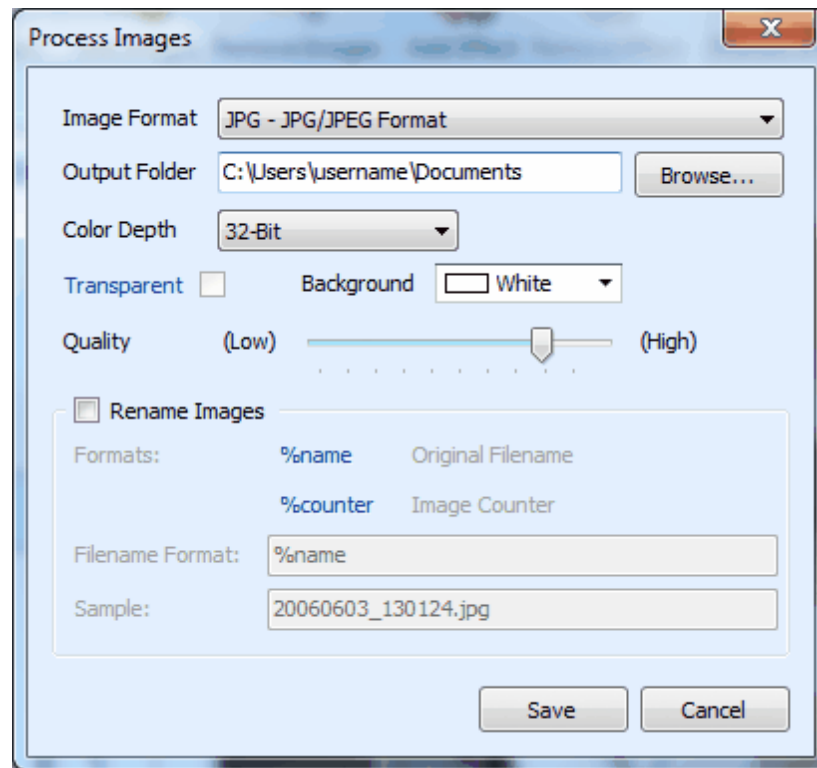
If the "Text" watermark is selected, you can enter the text you wish to appear in the corresponding field. Use the "Font..." button to change the font size, color and typeface used on the watermark text.

The "Padding" setting is used to increase or decrease the space surrounding the watermark. This is used when the watermark is placed around the perimeter of the image (such as in a corner).

Select the location of your watermark using the Location direction pad. The "Opacity" slider allows you to adjust the transparency of the watermark image.

## 4 Save Images

The last step of using Photo Lab is apply the list of Effects to all the images. This is done using the "Save Images" button located on the main toolbar. (This button won't be enabled until at least one image and one effect is added to the Project.)



**Image Format** - This is the image format that Photo Lab will use when saving your images. Regardless of the original image format Photo Lab will save the modified image in the selected format. This feature can also be used to convert images from one format to another (such as BMP files to JPEG).

**Output Folder** - This is the folder where Photo Lab will save all the modified images. It is strongly recommended that you select a different folder than the one containing the source images to prevent accidentally overwriting the originals.

**Color Depth** - (Does not apply to all Image Formats) This setting allows you to select the color depth used when saving the images. Lower color depth results in smaller files, however the quality of the images will be reduced. For best image quality use "32-bit" color depth.

**Transparent** - (Does not apply to all Image Formats) If the output image format supports transparency (such as PNG or GIF) you can use this option to preserve the transparency in the original image. If this option is left unchecked, any transparent pixels will be replaced with the selected Background color.

**Background** - This is the color that is used to replace transparent pixels in image formats that do not support transparency (or if the transparent option is disabled).

**Quality** - (Does not apply to all Image Formats) For image formats that support variable quality, this slider can be used to increase or decrease the output image quality. Lower output quality results in

smaller files sizes, but the image quality is also reduced.

**Rename Images** - This option allows you to dynamically rename the images. If this option is not selected, the original image filename is used (however the file extension may be changed if the output format is different than the original image). You can use the "%name" and "%counter" placeholders in the Filename Format field to create dynamic filenames. For example, if the original file were named "Example.gif", the Image Format were "JPG" and the Filename Format was "%name - Thumbnail", the resulting filename would be "Example - Thumbnail.jpg".

## 5 License Agreement

This legal document is an agreement between you, as licensee and Inspyder Software Inc. ("Inspyder"), as licensor. You should carefully read the following terms and conditions before using this product. Using this product indicates your acceptance of these terms and conditions.

**DEFINITIONS:** "Product" means (a) all of the contents of the files, disk(s), CD-ROM(s), DVD(s), or other media with which this Agreement is provided, including but not limited to Inspyder or third party computer information or software; written documentation or documentation files; and (b) upgrades, modified versions, updates, and additions. "Use" or "Using" means to access, install, download, copy or otherwise benefit from using the functionality of the Product in accordance with the documentation. "You" and "Your" means the purchaser of the Product license.

**GRANT OF LICENSE:** The Licensor grants to You a non-transferable non-exclusive license to use the Product on a single computer. You may physically transfer the Product to another computer provided the Product is used only on a single computer. Installing the Product in a shared environment such as a Terminal Server or otherwise making it accessible to more than the single computer, even if only one user is using the Program at any given time, violates this license agreement. You may not modify, adapt, translate, reverse engineer, decompile, disassemble or create derivative work based on: (a) the Product; (b) written material associated with the Product; (c) the concepts or technology utilized in this Product.

**COPY RESTRICTIONS:** You may not copy the Product including any Product that has been modified, merged or included with other products except as specified in this Agreement, nor may You copy any written materials associated with the Product. You shall be held legally responsible for any copyright infringement that is caused or encouraged by Your failure to abide by the terms of this license.

**TRANSFER RESTRICTIONS:** The Product is licensed only for You, and You may not transfer the Product or the license to use the Product without Licensor's prior written consent. Any authorized transferee of the Product shall be bound by the terms of this Agreement. In no event may You transfer, assign, rent, lease, sell or otherwise dispose of the Product on a temporary or permanent basis except as expressly provided for herein. The Product cannot be resold.

**USAGE RESTRICTIONS:** The Product is licensed only for Your personal use. You cannot use the Product to provide a service to others. To be clear, you can use the Product as part of your web development activities, including web development for others. However, you cannot use Photo Lab to provide an exclusive service such as using Photo Lab as part of a web checking or analysis service.

**LIMITED WARRANTY:** Except as expressly set forth herein, the Product is provided 'AS IS' without warranty of any kind, either express or implied, including, but not limited to the implied warranties of merchantability and fitness for particular purpose. Inspyder Software Inc. does not warrant that the function of this Product will be error free. However, Inspyder Software Inc. does warrant the media on which the software is furnished to be free from defects in material and workmanship under normal use for a period of 30 days from the date of delivery to You.

**LIMITATIONS OF REMEDIES:** The Licensor's entire liability and Your exclusive remedy shall be: (a) the replacement of any media not meeting Licensor's 'Limited Warranty' and which is returned to Licensor or an authorized representative of Inspyder Software Inc. with a copy of Your receipt; or (b) if Inspyder Software Inc. is unable to deliver replacement media which is free of defects in materials or workmanship, You may terminate this Agreement by returning the

Product and Your money will be refunded. In no event will Licensor nor anyone involved in the creation, production or distribution of the Product be liable to You for any direct, indirect, consequential or incidental damages including any lost profits, lost savings, lost business revenue or other commercial or economic loss arising out of the use or inability to use the Product even if Licensor or any authorized representative of Licensor has been advised of the possibility of such damages or for any claim by any other party.

**JURISDICTION:** The laws of the Province of Ontario, Canada shall govern this Agreement.

All rights are reserved; © 2011 Inspyder Software Inc.



Inspyder Software Inc.  
200-3342 Mainway,  
Burlington, Ontario,  
Canada, L7M 1A7